

# Down Country

Inspired by a Vintage Quilt

Created and Made by Maria Tavy Umhey

Featuring the Low Country Indigo Collection by Nancy Gere

Size: 64" x 72"



Check [www.windhamfabrics.com](http://www.windhamfabrics.com) Free Project section to see if there are any pattern updates before you start your quilt project

**WINDHAM** *W* **FABRICS**

812 Jersey Ave ~ Jersey City, NJ 07310 ~ 201.659.0444 ~ FAX: 201.659.9719  
[www.windhamfabrics.com](http://www.windhamfabrics.com) email: [retail@windhamfabrics.com](mailto:retail@windhamfabrics.com)



# Down Country

Page 2

Skill level: Intermediate

Seventy-two 8 " blocks (36 pieced, 36 plain alternate blocks)



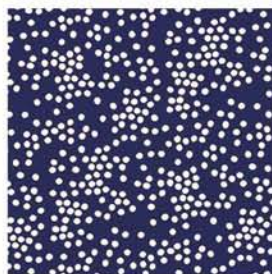
40135-1 Navy



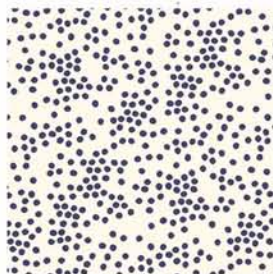
40136-1 Navy



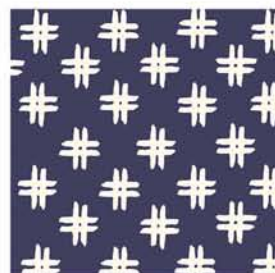
40136-2 Linen



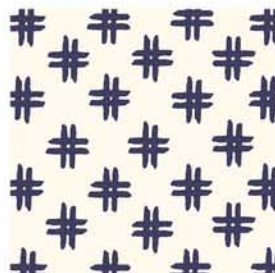
40137-1 Navy



40137-2 Linen



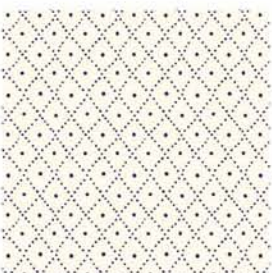
40138-1 Navy



40138-2 Linen



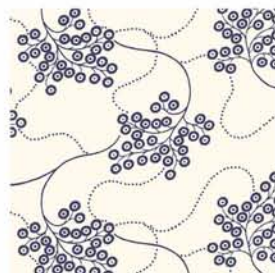
40139-1 Navy



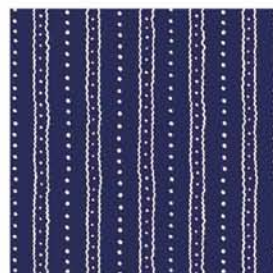
40139-2 Linen



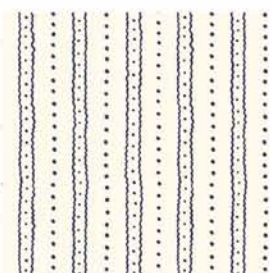
40140-1 Navy



40140-2 Linen



40141-1 Navy



40141-2 Linen

## Fabric Requirements:

2 3/4 yd. 40135-Navy large indigo print (alternate blocks and binding)

2 1/8 yd. 31835 White solid (from 1930s solids)

1/3 yd. each six indigo prints - 40136-1 Navy, 40137-1 Navy, 40138-1 Navy, 40139-1 Navy, 40140-1 Navy, 40141-1 Navy

1/2 yd. each six linen prints - 40136-2 Linen, 40137-2 Linen, 40138-2 Linen, 40139-2 Linen, 40140-2 Linen, 40141-2 Linen

4 1/4 yards for Backing

# Down Country

Page 3

## Cutting Directions:

*From the large indigo print cut: thirty-six  $8\frac{1}{2}$ " squares, seven  $2\frac{1}{2}$ " X WOF strips.*

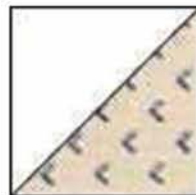
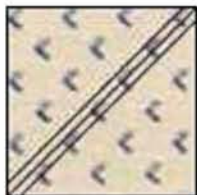
*From the white solid cut: seventy-two  $2\frac{7}{8}$ " squares, two hundred eighty-eight  $2\frac{1}{2}$ " squares.*

*From the assorted indigo prints cut: thirty-six matched sets of four  $4\frac{1}{2}$ " X  $2\frac{1}{2}$ " rectangles.*

*From the assorted linen prints cut: thirty-six matched sets of two  $2\frac{7}{8}$ " squares and four  $2\frac{1}{2}$ " squares.*

## Pieced Block:

- Draw a diagonal line on the back of each white  $2\frac{7}{8}$ " square. Place each one over a linen  $2\frac{7}{8}$ " square, right sides together. Sew a seam  $\frac{1}{4}$ " from each side of the drawn line. Cut along the drawn line to yield two half-square triangle units. Make thirty-six matched sets of four half-square triangle units.



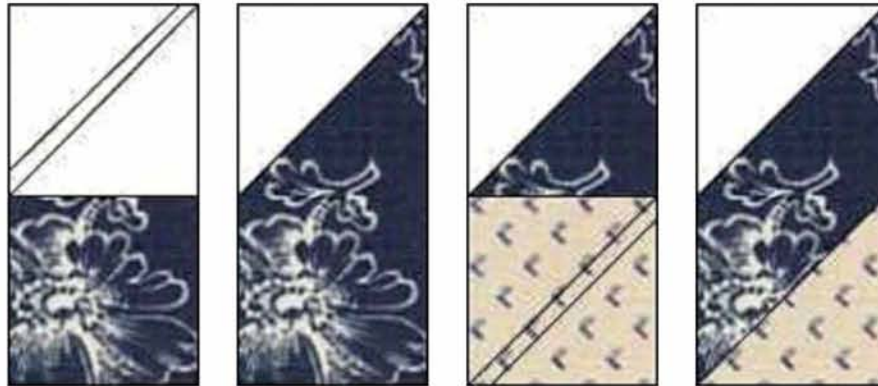
- Draw a diagonal line on the back of one hundred forty-four white  $2\frac{1}{2}$ " squares and all the linen  $2\frac{1}{2}$ " squares.
- Place a white  $2\frac{1}{2}$ " square with drawn line at the end of an indigo rectangle, right sides together, oriented as shown.
- Sew along the drawn line. Flip the white triangle up and press the triangle toward the corner being careful to align the points. Cut away the excess fabric leaving a  $\frac{1}{4}$  inch seam allowance.



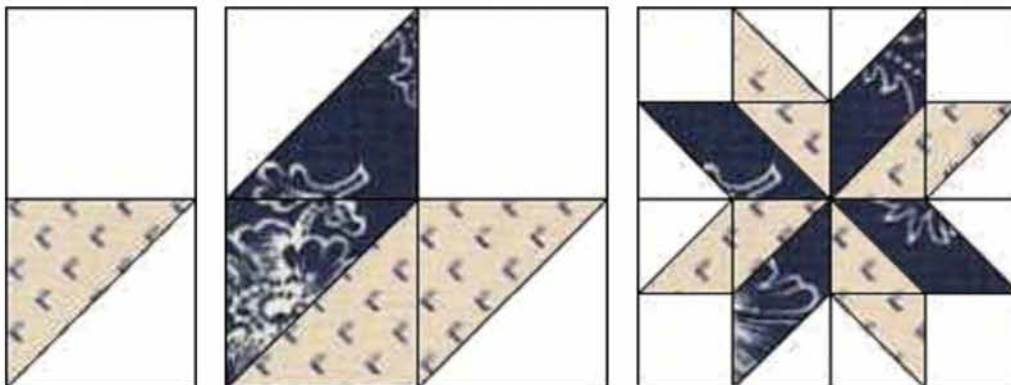
# Down Country

Page 4

- Repeat at the other end of the rectangle using the linen print squares. Make thirty-six sets of four stitch-and-flip units.



- Sew a white 2 ½" square to each half-square triangle unit, oriented as shown below.
- Using matched sets, sew four half-square triangle units to four stitch-and-flip units to make quarter block units.
- Sew these quarter block units together pinwheel fashion. Make thirty-six blocks.



## Finish the quilt:

- Sew together four pieced blocks and four large indigo print squares for each of the nine rows. Press toward the indigo print.
- Sew together the rows making sure the odd rows start with a plain block and the even rows start with a pieced block.
- Layer the backing, batting and quilt top. Baste and quilt as desired.
- Use the 2 ½" strips to bind the quilt.

Be sure to visit [www.windhamfabrics.com](http://www.windhamfabrics.com) to see the complete collection and to download this and other Free Projects